

MONTHLY MEMBERSHIP PROGRESS REPORT

LOCATION NEW YORK

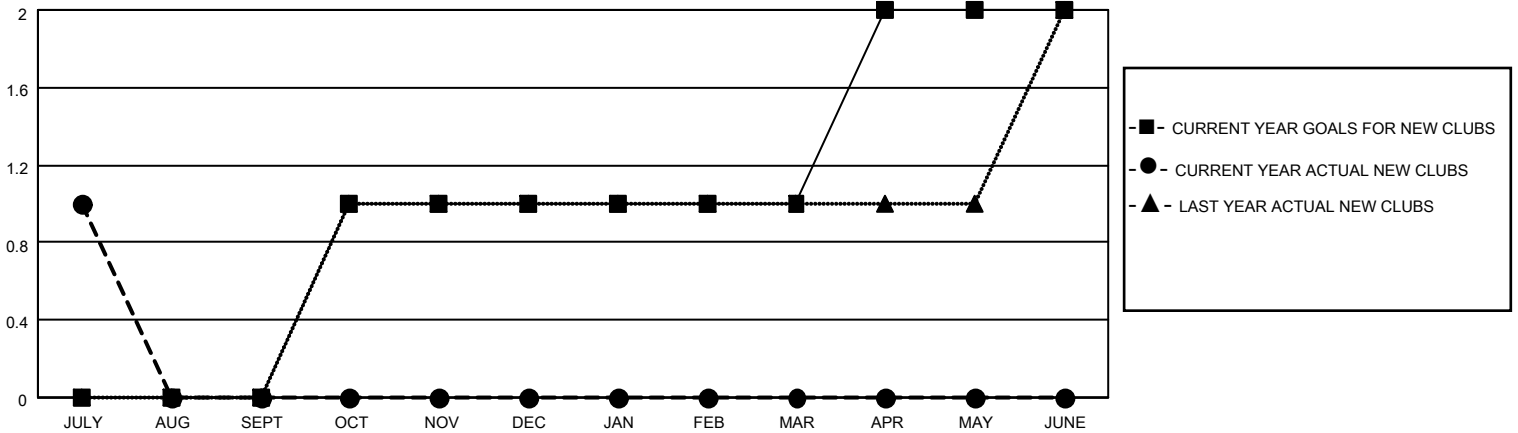
District 20 K1

Results as of: 7/31/2021

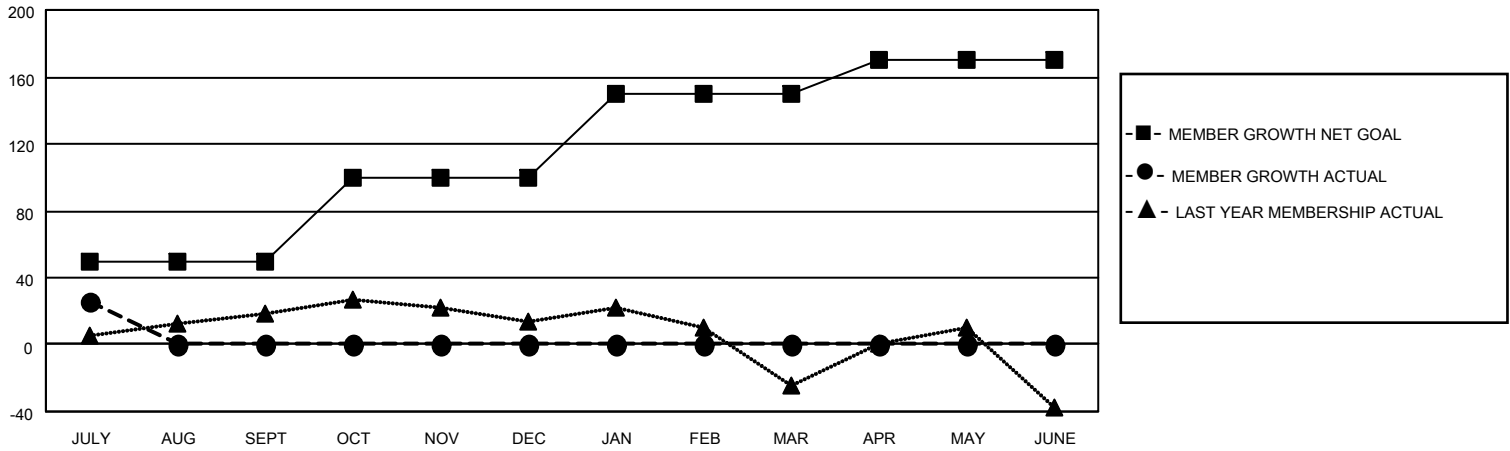
Clubs			
RESULTS FOR 2021-2022			
QUARTER	NEW CLUB GOAL	NEW CLUBS	DROPPED CLUBS
JULY/AUG/SEPT	0	1	0
OCT/NOV/DEC	1	0	0
JAN/FEB/MAR	0	0	0
APR/MAY/JUNE	1	0	0

Members			
RESULTS FOR 2021-2022			
QUARTER	MEMBER GROWTH NET GOAL	MEMBER GROWTH ACTUAL	DROPPED MEMBERS ACTUAL (including transfers)
JULY/AUG/SEPT	50	39	9
OCT/NOV/DEC	50	0	0
JAN/FEB/MAR	50	0	0
APR/MAY/JUNE	20	0	0

GOALS AND ACTUAL NEW CLUBS CUMULATIVE



GOALS AND ACTUAL MEMBERS CUMULATIVE



DROPPED CLUBS: 0

4 CLUBS OF 77 ADDED 1 OR MORE NEW MEMBERS

GENDER DISTRIBUTION

MALE 709 (36.40%)
 FEMALE 1,239 (63.60%)

DROPPED MEMBERS

[CLICK HERE FOR CUMULATIVE MEMBERSHIP DATA](#)

DECEASED	1
CLUB CANCELLED	0
OTHER	8
TOTAL	9

TOTAL FAMILY UNIT MEMBERS	204
FAMILY MEMBERS PAYING HALF DUES	108